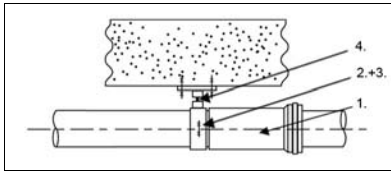


Anchor point with expansion socket

8.2 Anchor bracket with expansion socket

This method of installation is used for flexible installations where the expansion force is not transferred to the building structure. Only the force caused by the internal resistance of the expansion socket is transferred.



1. Expansion socket
Art. Nr. 40xx20
2. Clamp liner Art. Nr.
70xx15
3. Anchor bracket
Art. Nr. 70xxxx
4. Mounting plate for anchor
bracket Art. Nr. 7094xx

The anchor bracket must be fixed to the building in such a way that it can resist the forces caused by the internal friction resistance of the expansion socket.